



BACK TO SCHOOL NEWS

SCHOOL YEAR 2017-2018

WELCOME!

Welcome to the start of a brand new school year. The first few weeks are always so exciting! We are glad that each one of you will be a part of our program and this will be the very best-ever school experience for your child.

PRESCHOOL/MDO

WEBSITE

Be sure to visit our website during the school year. We have posted upcoming events, the monthly newsletter, our school calendar, the Preschool/MDO Handbook, forms, pictures, and so much more to come during the year. You will find us at:

www.fishersumc.org/prescho



PARENT ORIENTATION

We look forward to meeting all of you at our Parent Orientation meeting on Tuesday, August 22nd at 7:00PM in the Sanctuary. Then, after this brief meeting, you will have an opportunity to visit with your child's teachers and meet with them. During this time, the teachers will explain the routine of their class, what you'll need to send with your child, and much, much more. Remember, this meeting is for parents only.

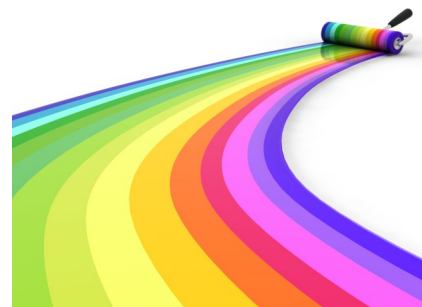
OPEN HOUSE

Bring your child to visit his/her class and tour the building on Wednesday, August 23rd from 9:15AM—11:15 AM. Come whenever it's convenient for you (unless you've received a postcard from your teacher with a designated time) and plan to stay in the classroom for about 20 minutes. If you have more than one child enrolled in the program, be sure to allow enough time to visit each classroom.

FORM DEADLINES

The **Pink Registration Form**, the **Blue Medical Consent Form (new students only)**, and **Equipment Fee** must be returned by **August 10th**. Please mail these forms with your payment. Only our **NEW STUDENTS** need to complete the **Blue Medical Consent Form**. Children **CAN NOT** attend classes without their Blue Medical Consent Form (this form needs to be Notarized which can be done at your bank) and their Pink Registration Form turned in

to the office. The Green Health Form, is due by September 30th to give you more time to get them back from your doctor. The Indiana State Board of Health requires that we have each student's medical history on file. You may provide a current copy of office shot records.



TUITION PAYMENT

September thru April tuition is due the 1st of each month. There is a \$10.00 Late Fee charge for any tuition paid after the 10th of each month. Your tuition payment may be mailed or placed in the Tuition Box on the wall outside the Preschool Office. Should you encounter a hardship during the school year, we are always willing to work with you regarding your tuition.

Tuition may also be paid by the semester or in full for the year. Please contact the Preschool/MDO Office to set this up.

SCHOOL CALENDAR

Classes will begin Monday August 28th

August	10	Pink Registration and Equipment Fee. (Blue Medical Consent Form for new Students only)
	22	Parent Orientation 7:00PM
	23	Open House 9:15AM—11:15AM
	28	First Day of School
September	5	Labor Day No School
	1st-10th	September Tuition Due
	11	September Tuition Late; Add \$10.00

Our school calendar and our Parent Handbook is on our website. For those of you who would like printed copies are available in the Preschool/MDO Office



CLASS TIMES

Mother's Day Out9:15 am—1:15 pm

M/W Junior (3's) Preschool 9:15am-1:15pm

T/TH Junior (3's) Preschool9:15am-1:15pm

M/W/F Senior (4's) Preschool 9:15am-1:15pm

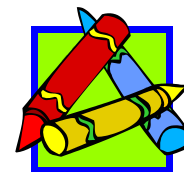
T/TH/F Senior (4's) Preschool 9:15am-1:15pm

M/T/W/TH Transitional-K (4's & 5's) . . .9:15am-1:15pm

Student Directory

Please be sure to complete the Student Directory
ONLY IF YOU DO NOT want your child's information
(address and/or phone number) listed in the Directory.
Return this form by September 30th.

COLORED FORMS DUE



PINK FORMS DUE AUGUST 10TH

BLUE FORMS, ONLY FOR NEW STUDENTS, DUE
AUGUST 10TH

EQUIPMENT FEE DUE AUGUST 10TH

GREEN FORMS DUE SEPTEMBER 30

VOLUNTEER OPPORTUNITIES

Various activities occur during the school year that offer you a chance to become involved in your child's school. Please read about the ways you can help on the enclosed yellow form and return it to the Preschool Office, completed with the areas where you would like to help. We welcome the involvement of all our parents!!!

OUR OFFICE

Please feel free to talk with either Jane Musser or Diane Renner with any questions or concerns you might have. Our Office doors are ALWAYS open.

Janes Office by door #4 and Diane New location by waiting area.

If you would prefer to reach us by email, you may do so at:

jmusser@fishersumc.org

drenner@fishersumc.org

